

Instream Flows in the Spokane River

Guy J. Gregory
Washington Dept. of Ecology
Water Resources Program

Spokane River upstream from
Sullivan Rd. Bridge
8/31/2009
327 cfs @ Post Falls

2/12/2014

The language of in-stream values

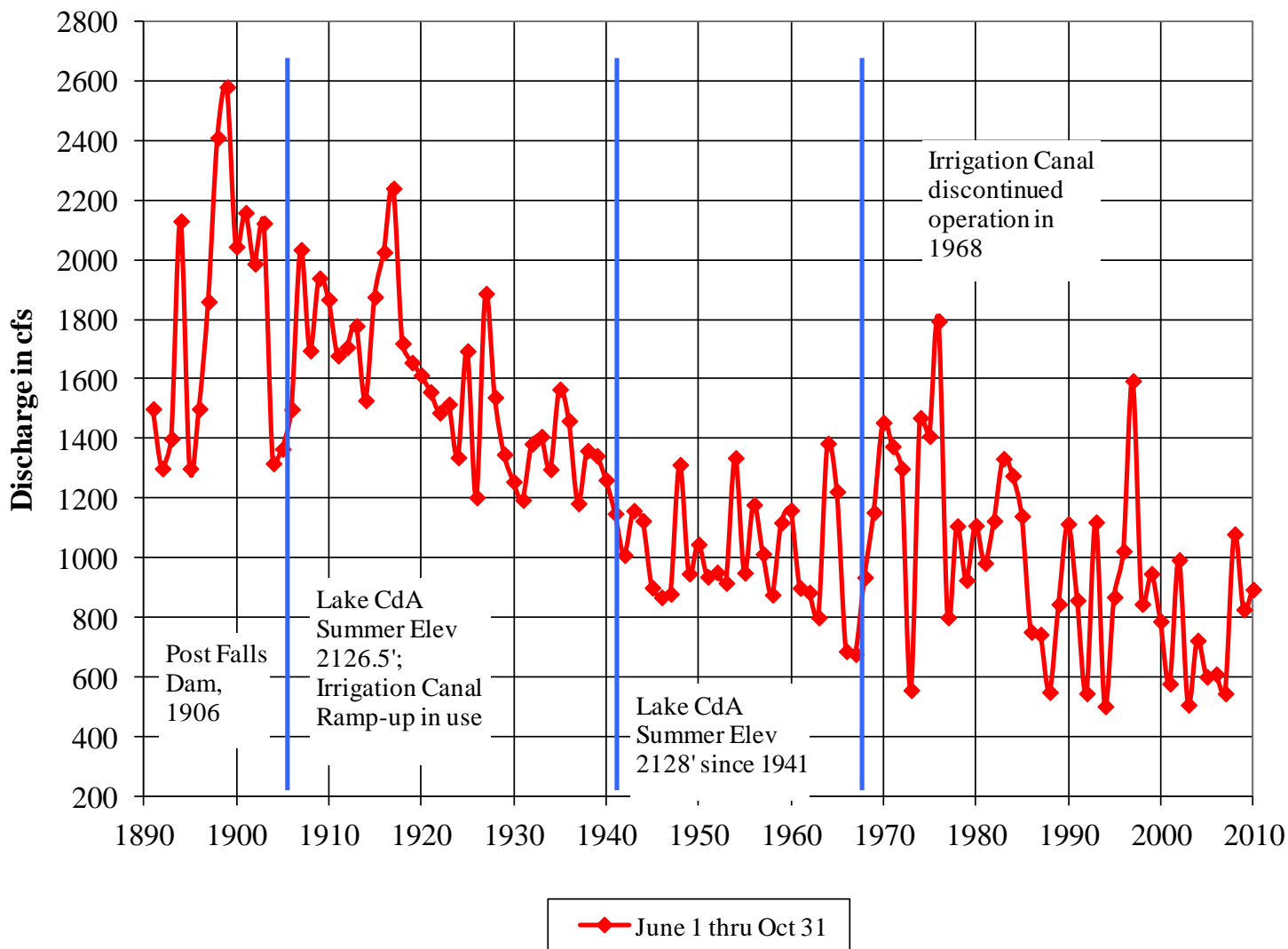
- **Minimum Flows**

- specific flows to protect specific values: fish habitat, recreation, aesthetics
- Federal Energy Regulatory Commission and Clean Water Act section 401 certification
- Minimum flows for operation of hydropower system

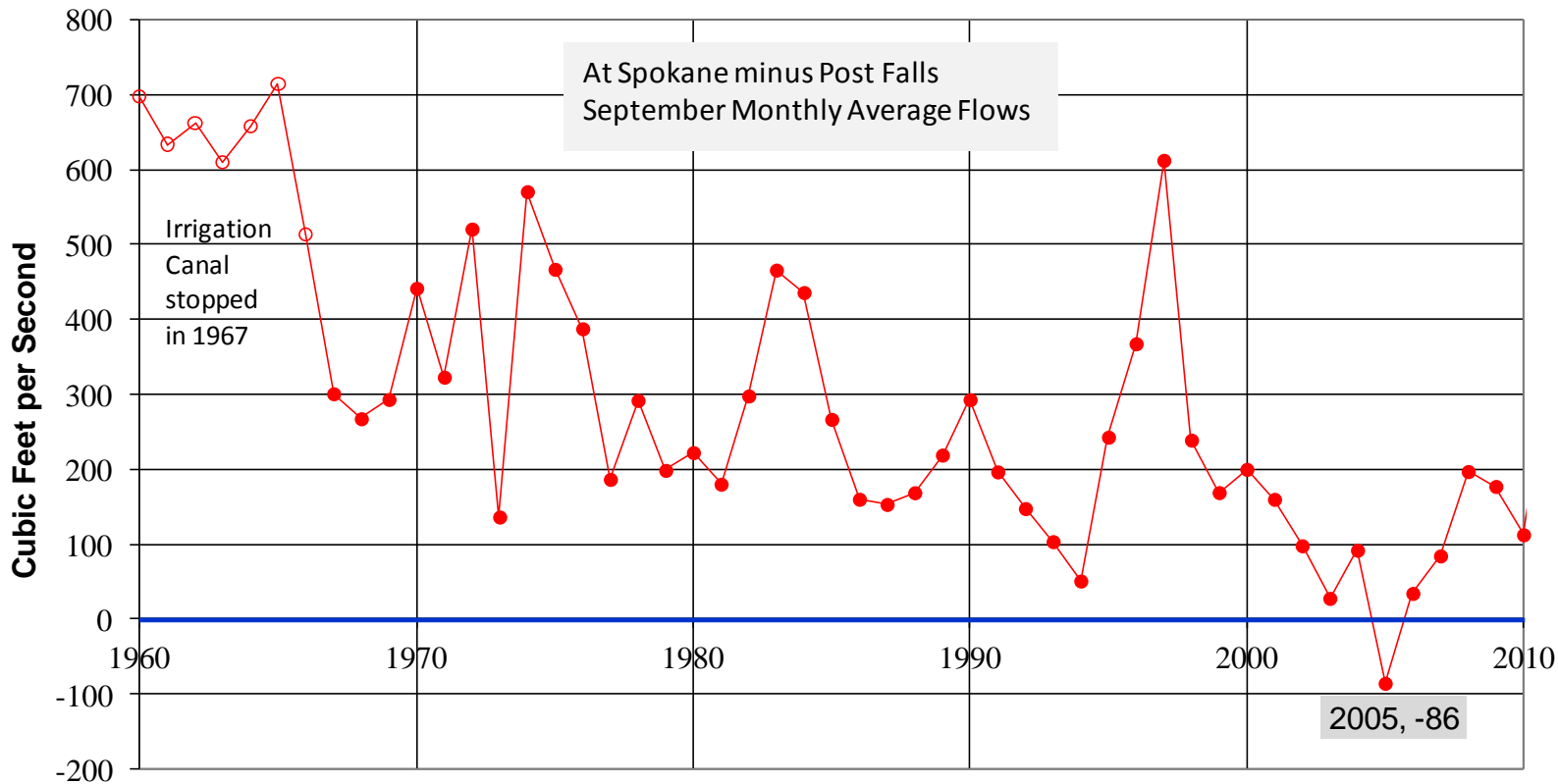
- **Instream Flows**

- specific flows to protect specific values: fish habitat, recreation, aesthetics
- Idaho Water Resource Board, WRIA Planning units
- RCW 90.22, 90.54
- a “Water Right for the River”

Spokane R at Spokane 7-Day Low Flow



Spokane River September Differences in Monthly Average Flows

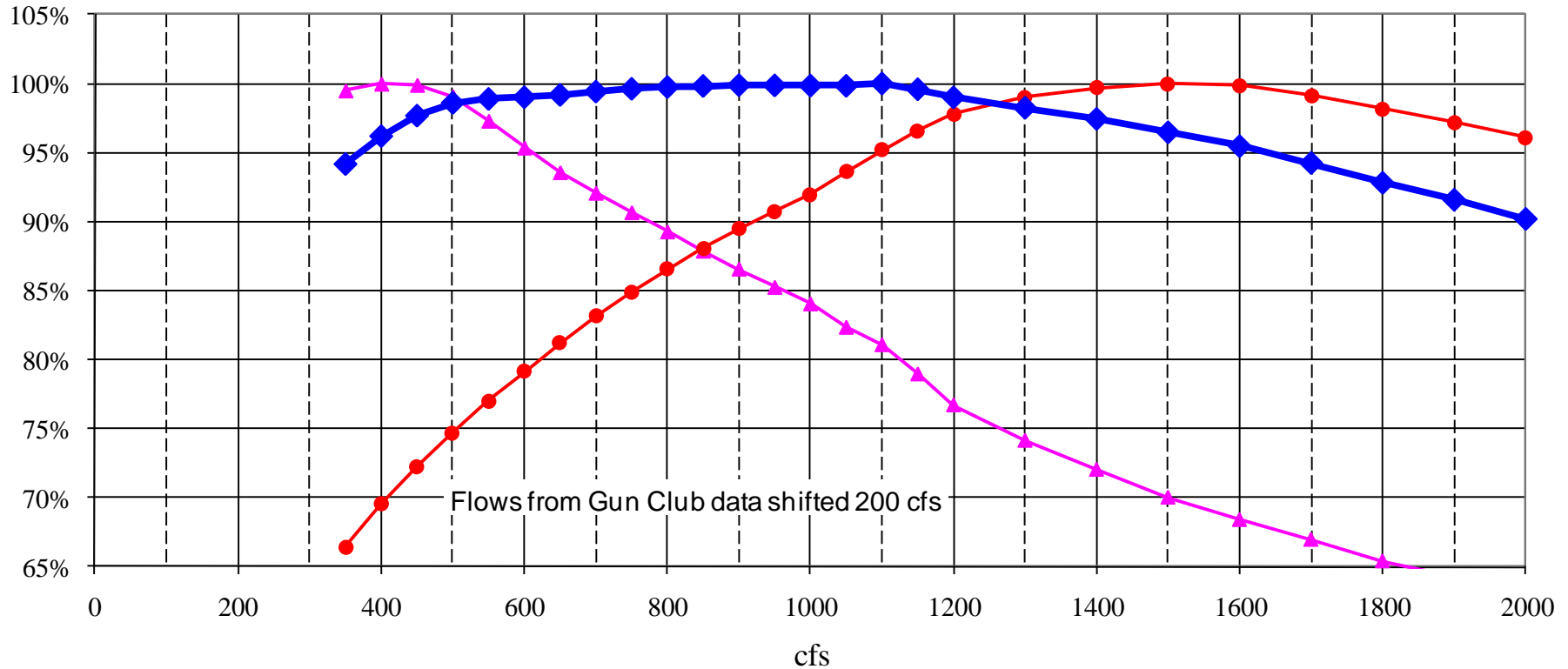


SVRP Aquifer's Contribution to the Flow in the Spokane River

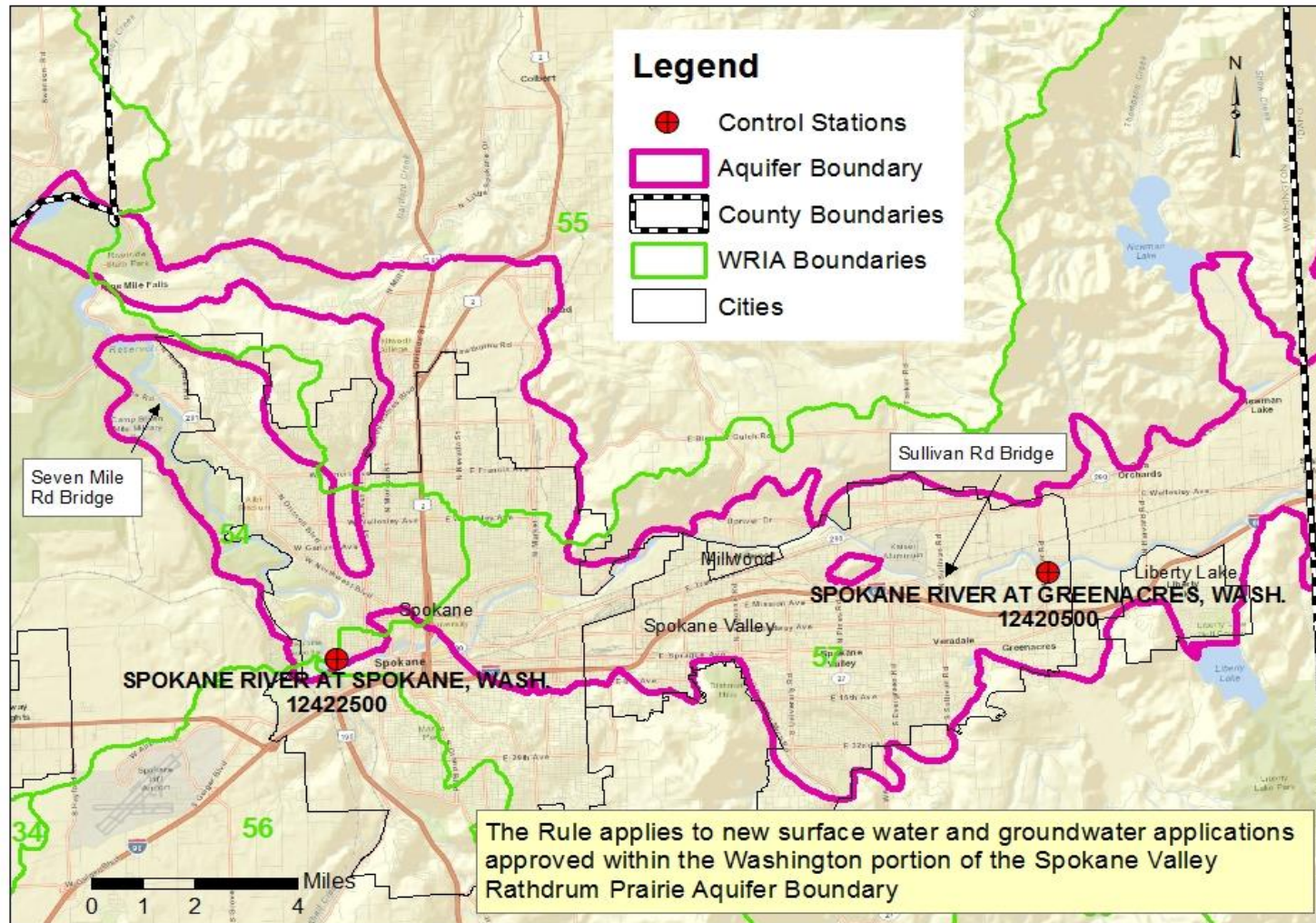
Four campaigns of fish science investigations 2000-2011

Result: June 16 -September 30 minimum flows to protect fish= 850 cfs.

Lower Spokane River Instream Flow Data
Combined Percentages based on 'at Spokane' Flow
Weighted Proportionally to Reach Length
(20% for 'at Spokane', 80% for Gun Club)

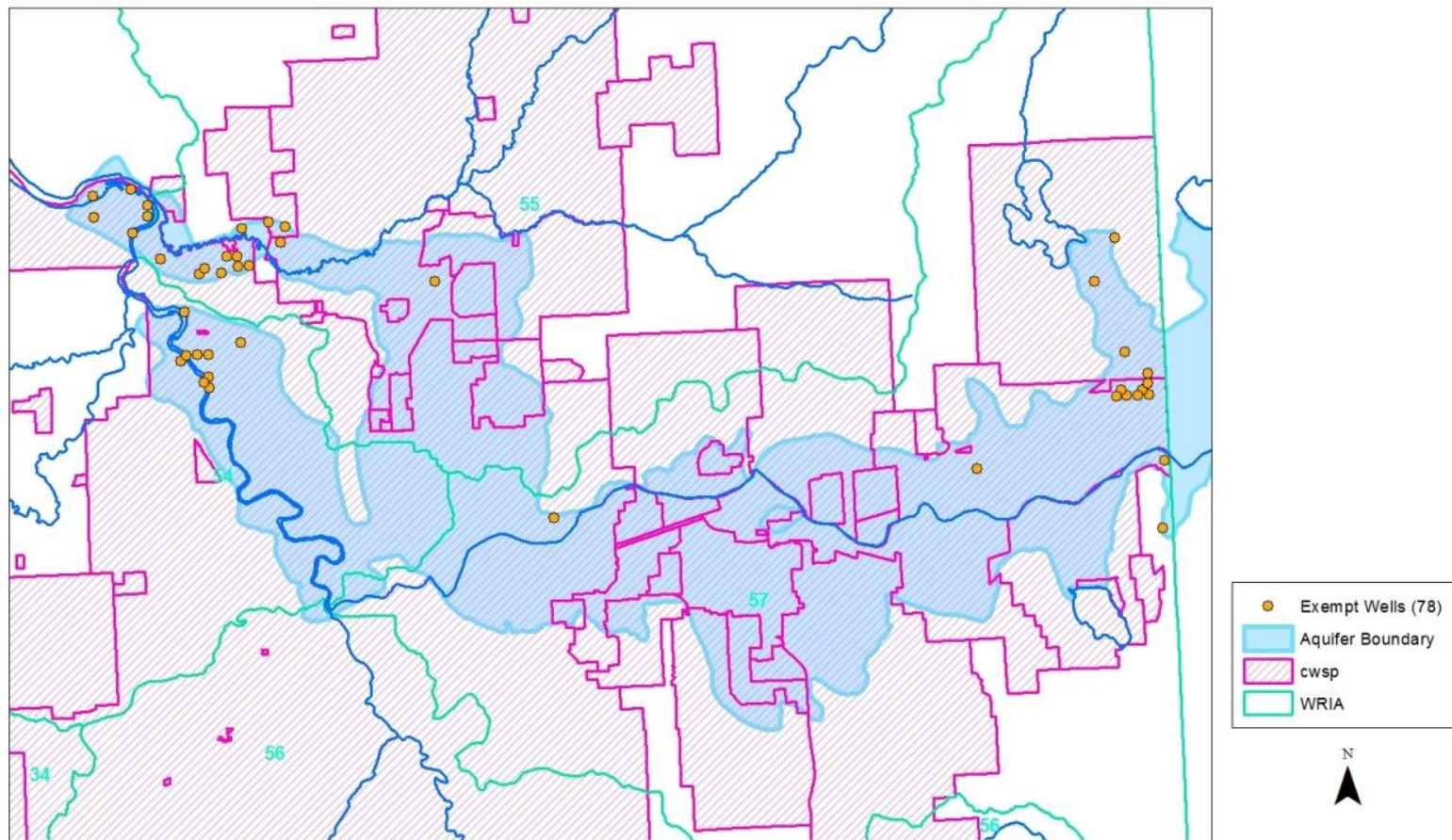


Where would the rule apply?

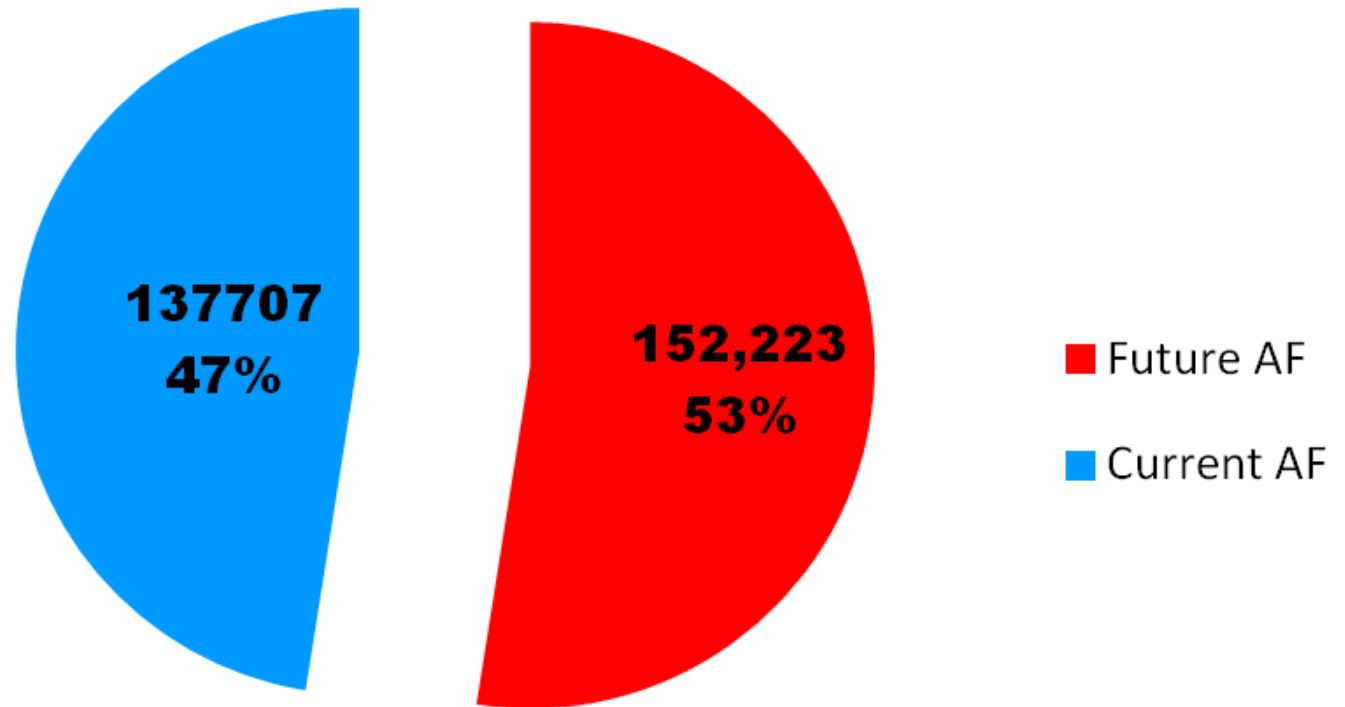


How does this affect existing rights, and what about permit exempt wells?

Domestic Exempt Wells drilled over the SVRPA
2002-present



Spokane Valley Rathdrum Prairie Aquifer in WA Existing Purveyor Water Use vs Future Authorized Use (Inchoate Paper)



State Caucus Recommended Minimum Instream Flows at the Spokane Gage

- October 1-March 31 1,700 cfs
- April 1-June 15 6,500 cfs
- June 16-September 30 850 cfs

How do proposed flows relate to river flow now?

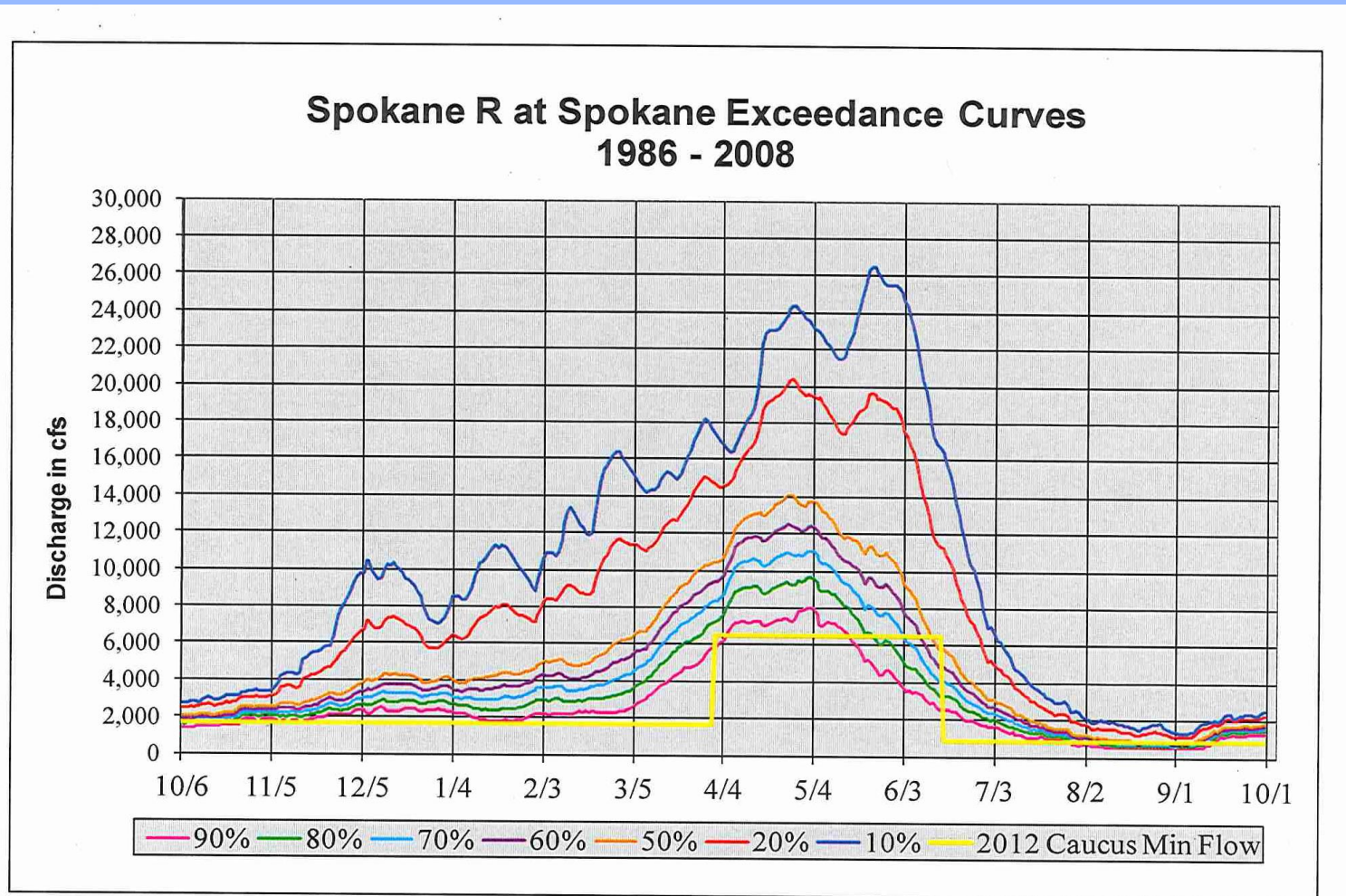
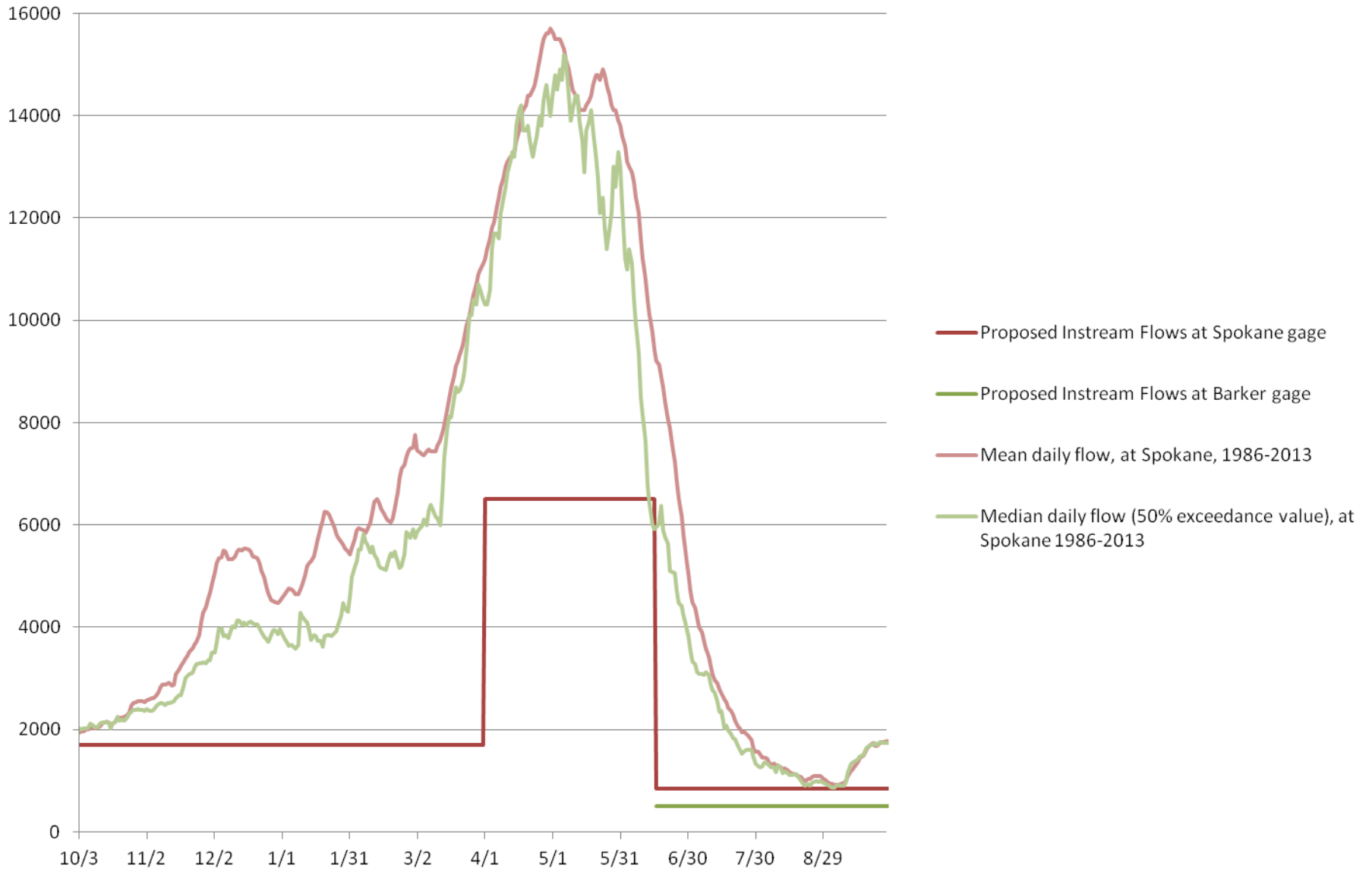


Figure 4. Exceedance hydrographs and recommended instream flows at USGS gauge 12422500 (Spokane River at Spokane).

Proposed flows vs. Mean Daily and 50% exceedance flows @ Spokane Gage

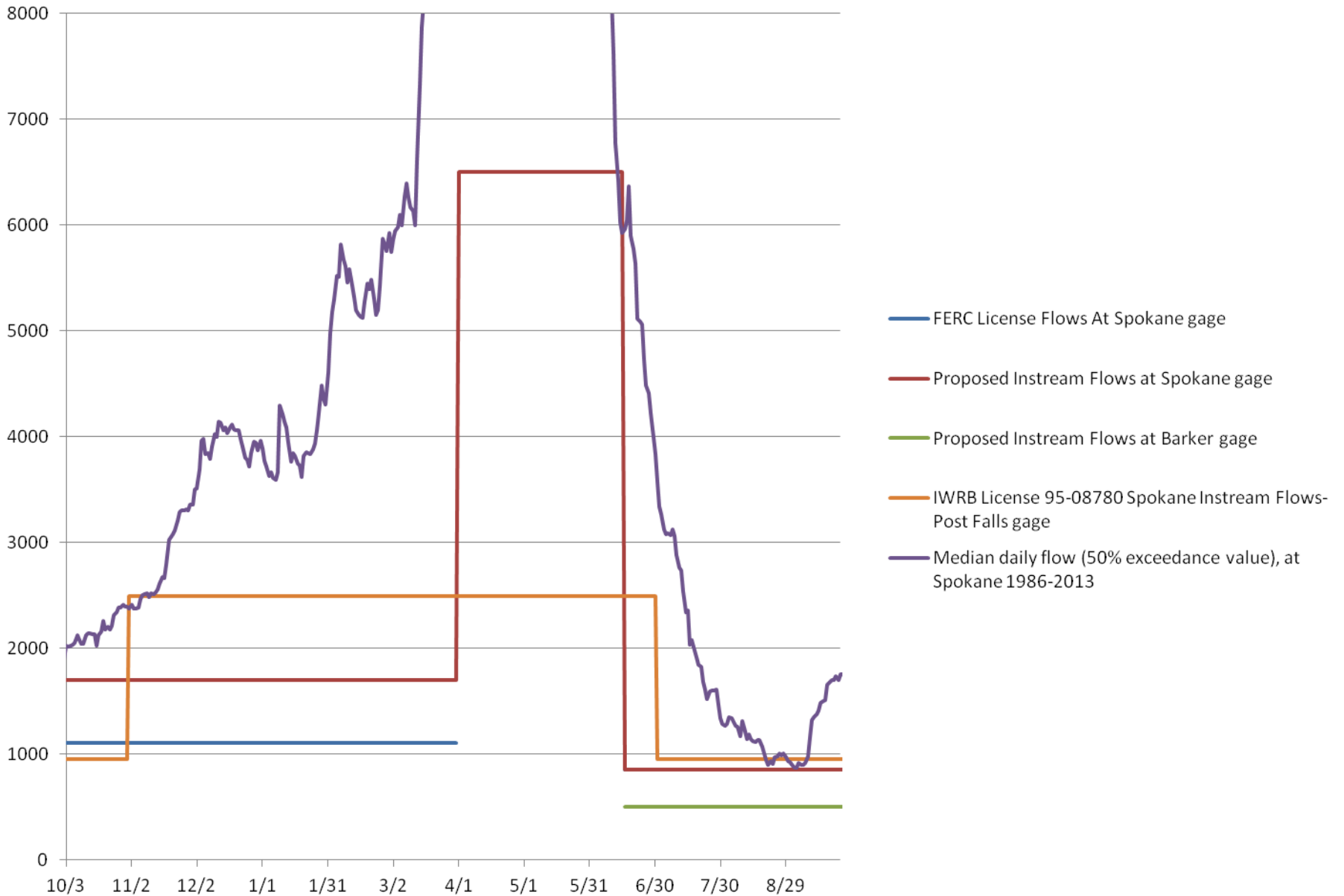


Summary:


Regulatory flows in Washington

Date	FERC License Flow at Spokane Gage	Proposed Instream Flow at Spokane Gage	Proposed Instream Flow at Barker Gage
October 1-March 31	1100 cfs	1700 cfs	
April 1-June 15	TBD	6500 cfs	
June 16-September 30	850 cfs	850 cfs	500 cfs

Proposed and Existing Regulatory Flows on the Spokane River



Timing

- ***First notice: CR-101 – Filed January 21, 2014*** 
- **Draft Proposed Rule Language to Interested Persons: March 2014**
- **Workshop on Draft: Early April, 2014**
- **Formal public process CR-102 begins– August 2014**
- **Public Hearing – September 2014**
- **Rule Adoption- January 2015**

More information

- Search Ecology webpage for Spokane River Rule
<http://www.ecy.wa.gov/programs/wr/rules/557-ov.html>
 - Sign up for listserv
 - Phone or talk to any of us
-
- **Ann Wessel – Rule writer**
Ecology-WRP
1440 10th St, Ste 102
Bellingham, WA
360-715-5215
ann.wessel@ecy.wa.gov
FAX: 360-715-5225
 - **Rusty Post – Watershed lead**
Ecology-SEAP ERO
4601 N Monroe
Spokane, WA
509-329-3579
rusty.post@ecy.wa.gov
FAX: 509-329-3529

Thank you!
Guy Gregory
WDOE Eastern Region
509-939-1052
guy.gregory@ecy.wa.gov

Harvard Rd, Downstream
4/21/2006
19,200 cfs @ Post Falls

04.21.2006 10:48