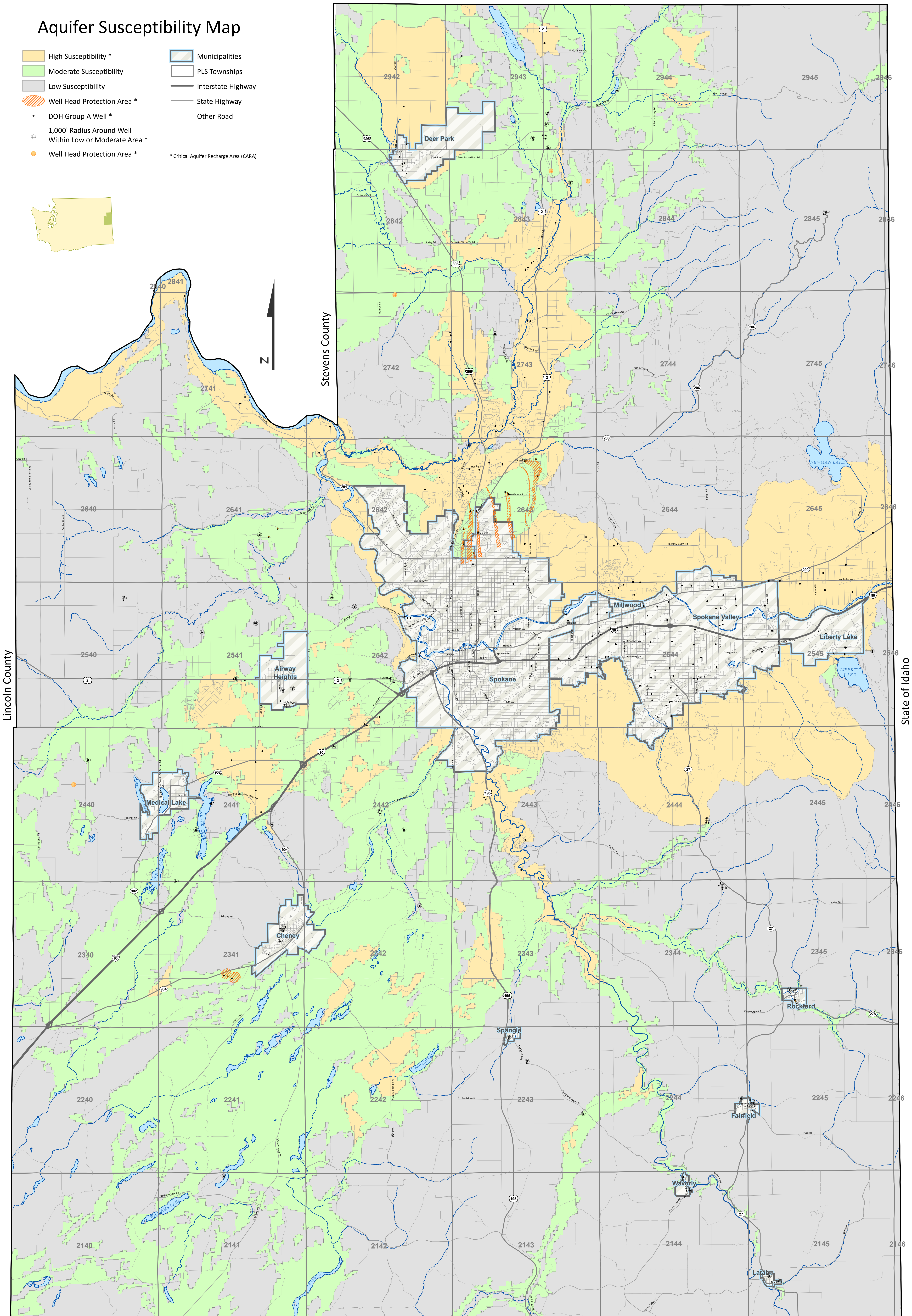
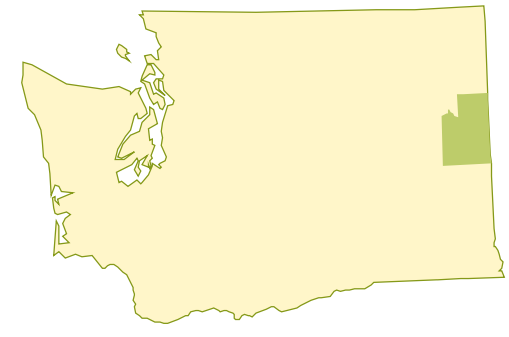


# Aquifer Susceptibility Map

- High Susceptibility \*
  - Moderate Susceptibility
  - Low Susceptibility
  - Well Head Protection Area \*
  - DOH Group A Well \*
  - 1,000' Radius Around Well Within Low or Moderate Area \*
  - Well Head Protection Area \*
- Municipalities
  - PLS Townships
  - Interstate Highway
  - State Highway
  - Other Road
- \* Critical Aquifer Recharge Area (CARA)



Lincoln County

Stevens County

Whitman County

State of Idaho