

Instream Flows in the Spokane River

Harvard Rd, Downstream
4/21/2006
19,200 cfs @ Post Falls

Guy J. Gregory
Washington Dept. of Ecology
Water Resources Program

04.21.2006 10:48

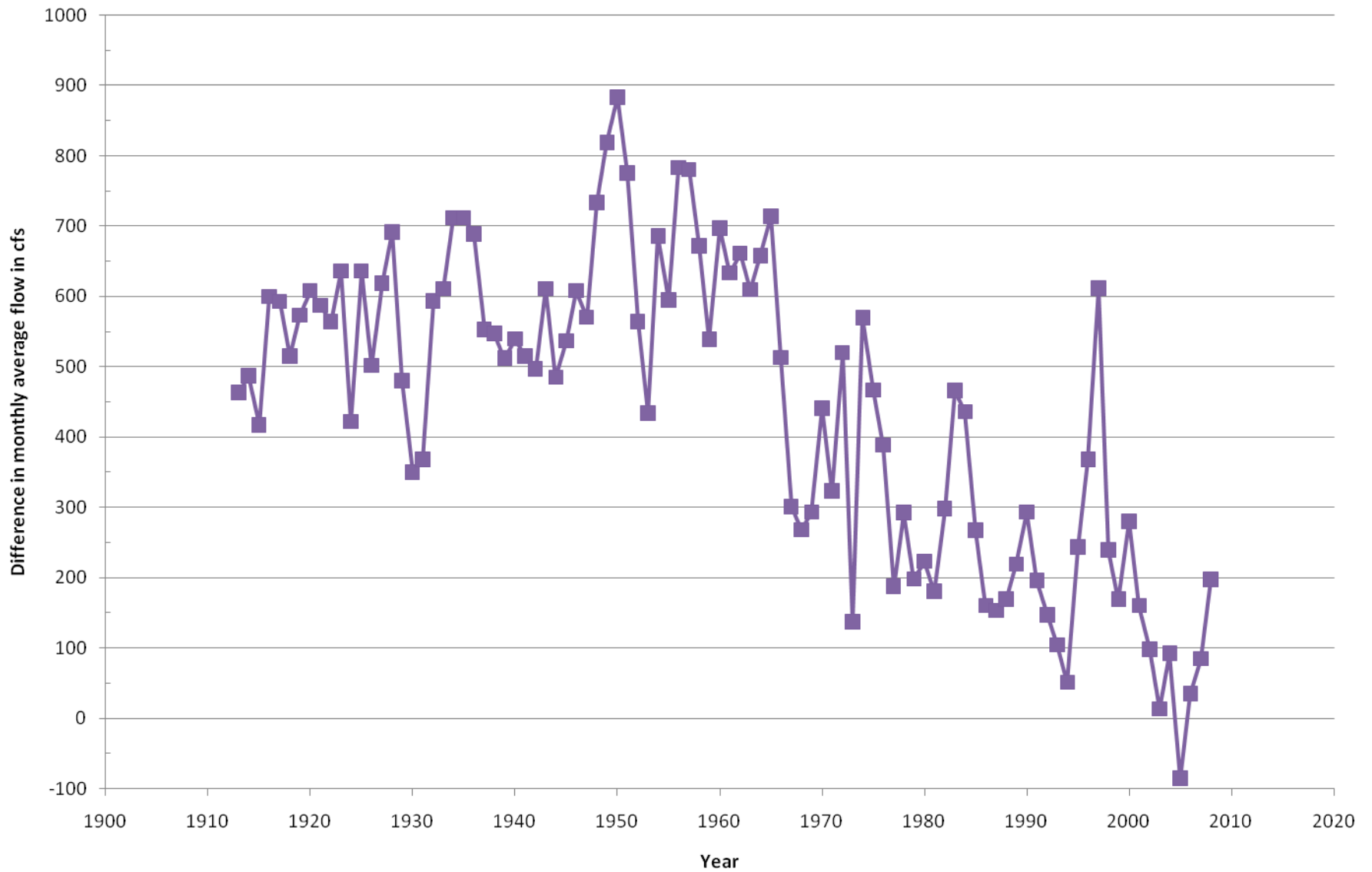
10/25/2013

Why now?

- We've got the science now.
 - Avista 401 process
 - WRIA process
 - Post 401 process
- We've got the people now.
 - Most WRIA participants and informed people are still here
 - Rule development staff within Ecology are here and experienced
 - 10 years of outreach = an informed public
- We've got the authority now.
 - RCW 90.22, RCW 90.54
- We've got an incipient water resource problem now.

Spokane at Spokane-Post Falls

September average difference (GW contribution)



The language of in-stream values

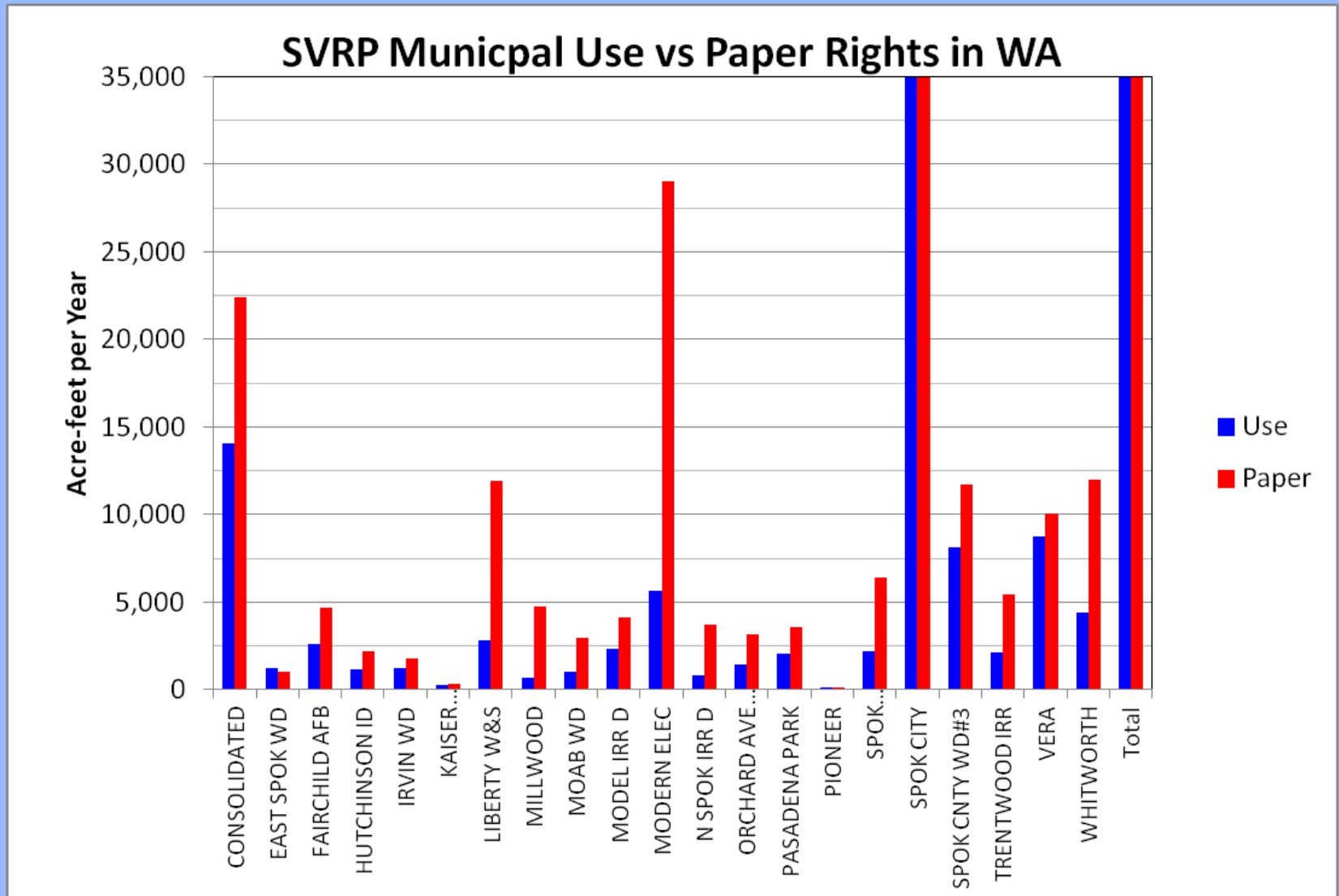
- **Minimum Flows**

- specific flows to protect specific values: fish habitat, recreation, aesthetics
- Federal Energy Regulatory Commission and Clean Water Act section 401 certification
- Minimum flows for operation of hydropower system

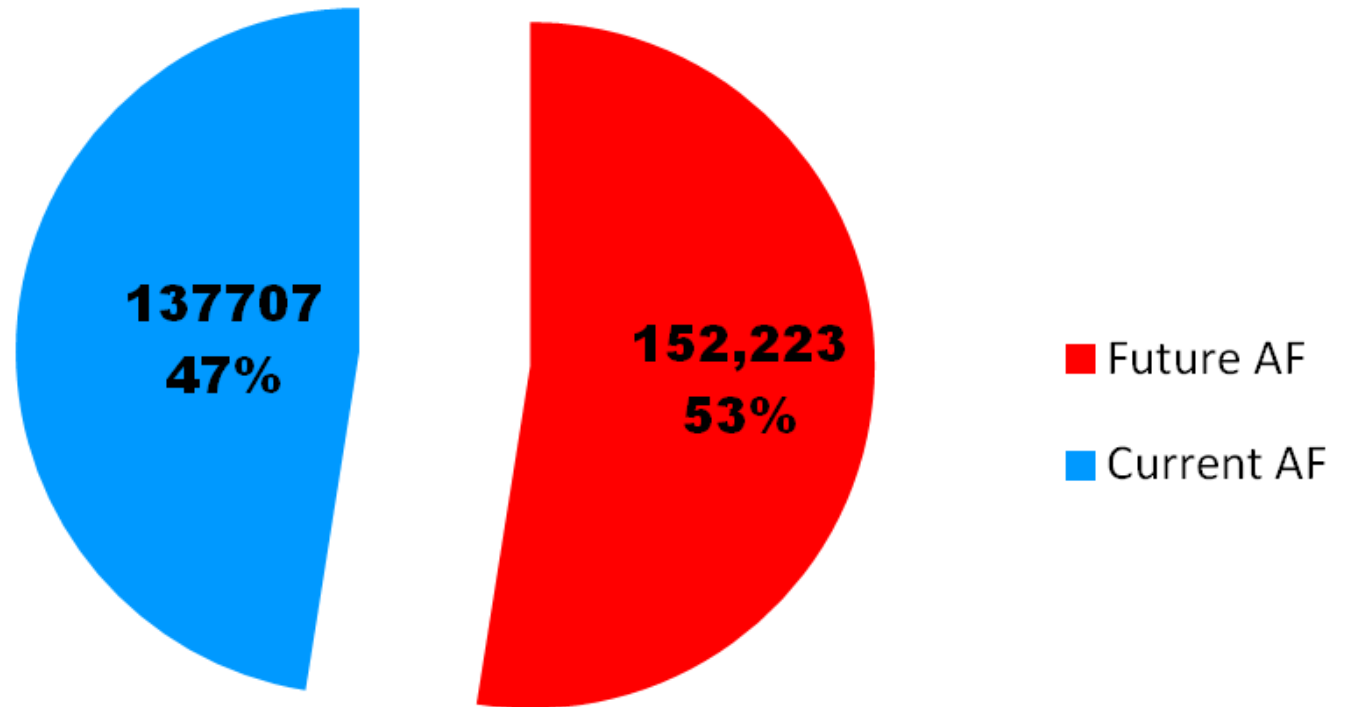
- **Instream Flows**

- specific flows to protect specific values: fish habitat, recreation, aesthetics
- Idaho Water Resource Board, WRIA Planning units
- RCW 90.22, 90.54
- a “Water Right for the River”

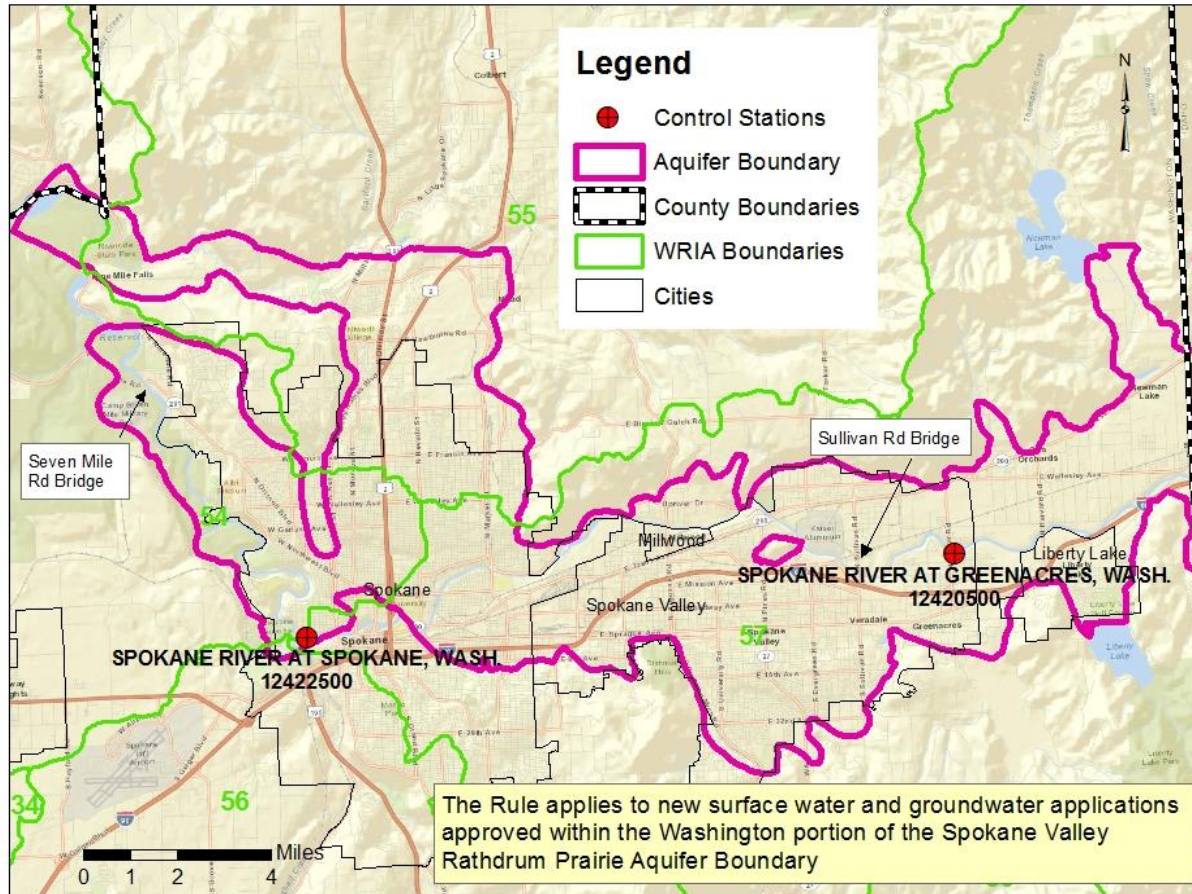
About water rights...



Spokane Valley Rathdrum Prairie Aquifer in WA Existing Purveyor Water Use vs Future Authorized Use (Inchoate Paper)

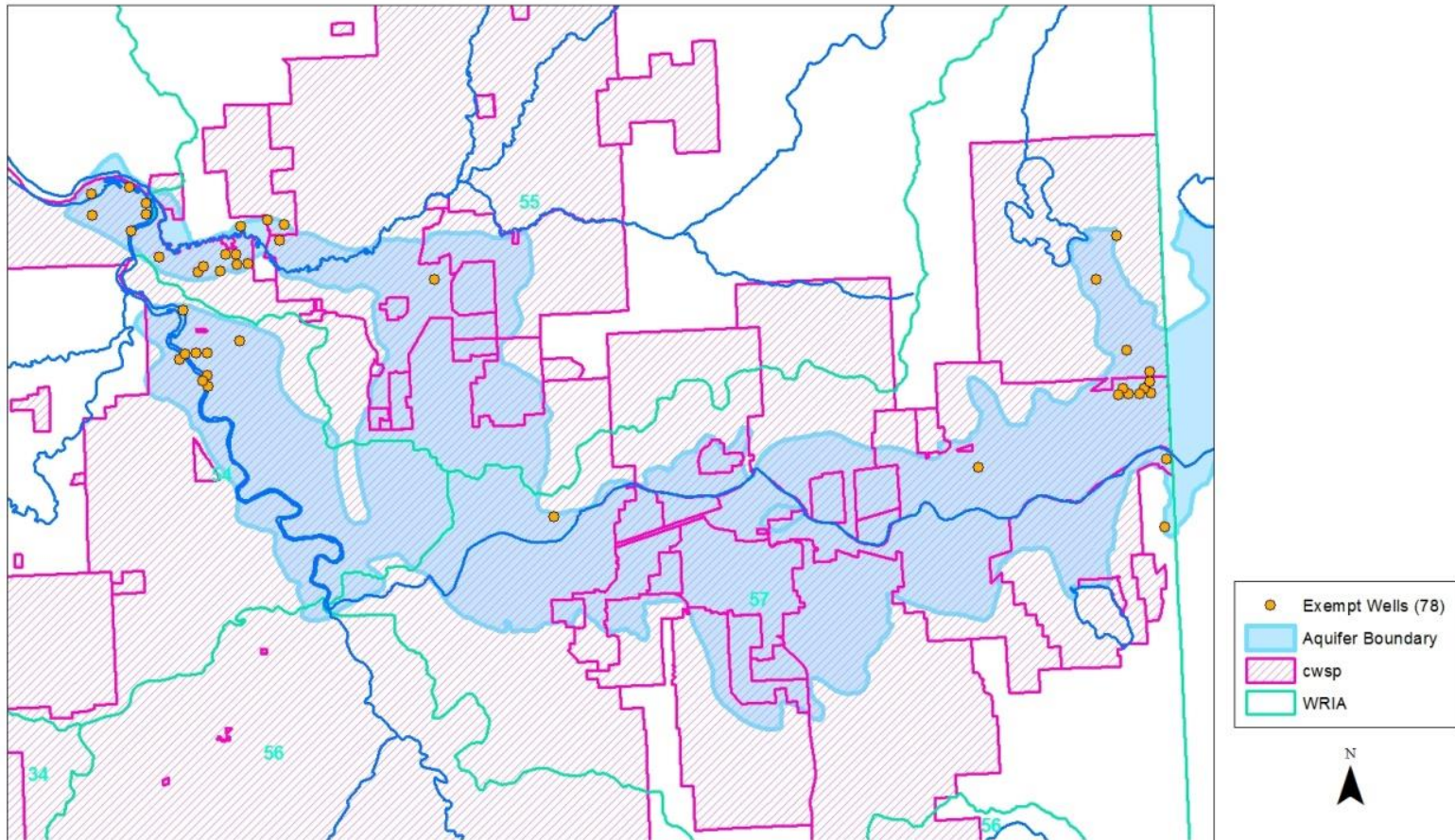


Where would the rule apply?



What about exempts?

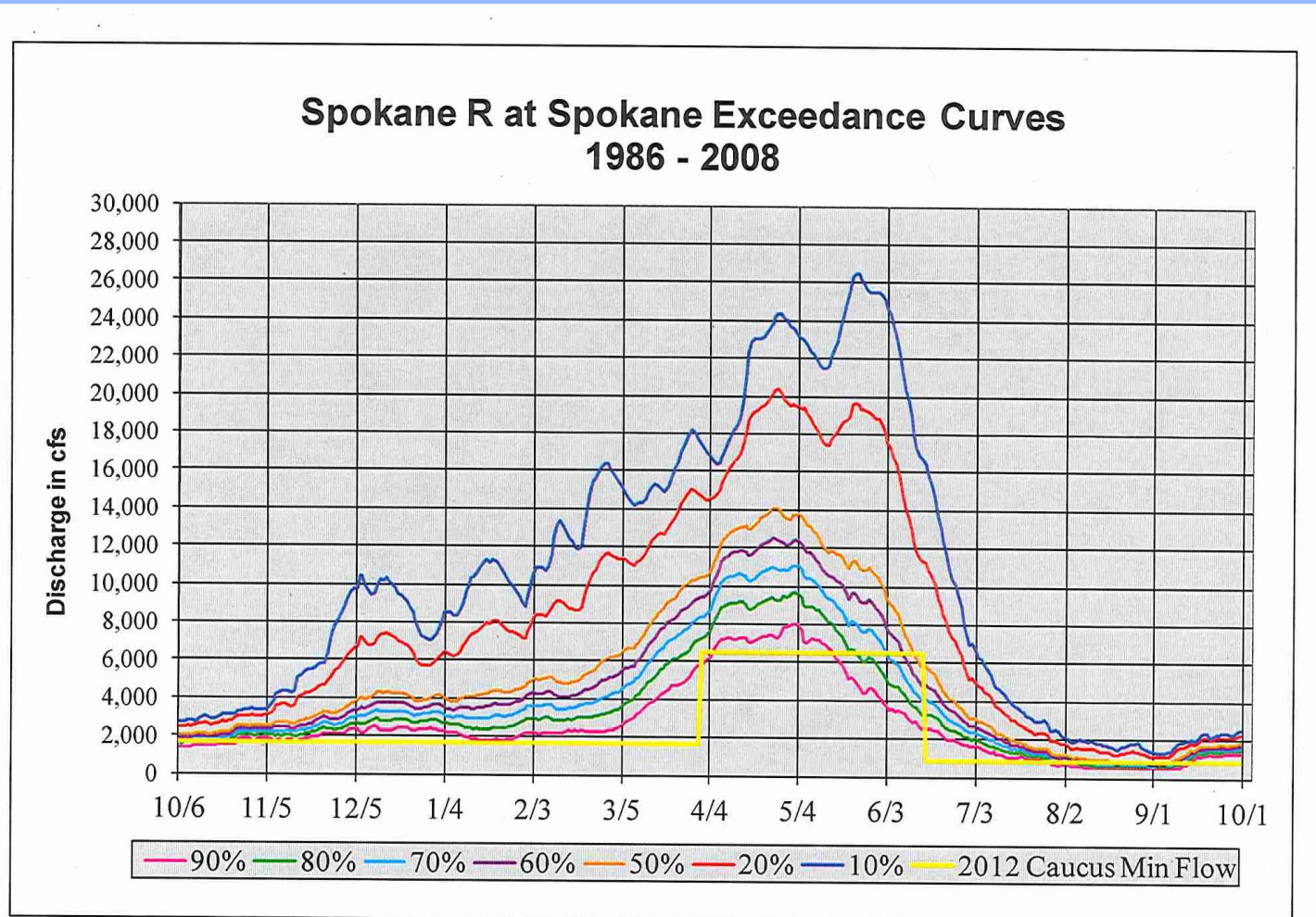
Domestic Exempt Wells drilled over the SVRPA
2002-present



State Caucus Recommended Minimum Instream Flows at the Spokane Gage

- October 1-March 31 1,100 cfs
- April 1-June 15 6,500 cfs
- June 16-September 30 850 cfs

How do proposed flows relate to river flow now?



10/25 Figure 4. Exceedance hydrographs and recommended instream flows at USGS gauge 12422500 (Spokane River at Spokane).

Timing

- **Senior Management Approval – Mid-July, 2013**
- **First notice: CR-101 – August 1, 2013**
- **Internal Proposed Rule Language – October 2013**
- **Public process begins: CR-102 – January 2014**
- **Rule language final:CR-103 – June 2014**
- **Rule Adoption**



Thank you!
Guy Gregory
WDOE Eastern Region
509-939-1052
guy.gregory@ecy.wa.gov

Spokane River upstream from
Sullivan Rd. Bridge
8/31/2009
327 cfs @ Post Falls

10/25/2013

13